

# Mount Diablo Unified School District

## Vendor Payment Detail Information

7/1/2000 through 6/30/2025

(sorted by : peid, po, pr, chkdt, chk# ....)

Invoice	Post Date	Account	Item Description	2nd Ref PO #	Check #	Check Date	ST.	Amount	Invoice Date
64300	COLLABORATIVE FOR ACADEMIC SOC								
JMELGOZA1	06/03/2021	01-3212-0000-2700-32120000-504-002-5210	REGISTRATION FOR [REDACTED]	213234	00092651	06/03/2021	PD	2,500.00	04/26/2021
Total Paid this vendor ( 64300 ) for above items								2,500.00	

# Mount Diablo Unified School District

## Vendor Payment Detail Information

7/1/2000 through 6/30/2025

(sorted by : peid, po, pr, chkdt, chk# ....)

Invoice	Post Date	Account	Item Description	2nd Ref PO #	Check #	Check Date	ST.	Amount	Invoice Date
---------	-----------	---------	------------------	-----------------	---------	------------	-----	--------	--------------

\*\*\*\*\*

\*\*\*\*\* END OF REPORT \*\*\*\*\*

REPORT TOTAL 2,500.00

\*\*\*\*\*



MT. DIABLO UNIFIED SCHOOL DISTRICT  
PURCHASING / WAREHOUSE DEPARTMENT  
2326 BISSO LANE  
CONCORD, CALIFORNIA 94520  
FAX: (925) 687-5044 (925) 825-7440

DATE 06/01/21

PURCHASE ORDER NO.

213234

VENDOR: COLLABORATIVE FOR ACADEMIC SOCIAL AND EMOTIONAL LEARNING - CASEL  
815 WEST VAN BUREN STREET, SUITE  
CHICAGO, IL 60607

**PURCHASING  
COPY**

DELIVER TO: MT DIABLO UNIFIED SCHOOL DISTRICT  
SASS/WING C  
1936 CARLOTTA DRIVE  
CONCORD, CA 94519

Req. # R123303	Vendor # 64300	Ship Via DESTINATIO	Department / Site S010013	Requisitioner NEVILLE, LOUISE	
Confirming <input type="checkbox"/> yes <input type="checkbox"/> no	Buyer CAROLANN IANORA	Extension #	Terms of Payment PREPAY	Date Required 06/03/21	
ITEM	QUANTITY	UNIT	DESCRIPTION	UNIT PRICE	EXTENDED PRICE
01	1	EACH	REGISTRATION FOR [REDACTED] TO ATTEND INAUGURAL ALLSTATE FOUNDATION COHORT OF THE SEL FELLOWS ACADEMY,	2,500.00	2,500.00
				Tax	0.00
				TOTAL	2,500.00

ACCOUNT NO.	AMOUNT
504321239 5210	2,500.00

APPROVAL:



Superintendent

Date

SEND INVOICE TO: MT. DIABLO UNIFIED SCHOOL DISTRICT  
FISCAL SERVICE DEPARTMENT  
1936 CARLOTTA DRIVE  
CONCORD, CALIFORNIA 94519

TO RECEIVE PROPER PAYMENT THE ABOVE PO NUMBER MUST APPEAR ON ALL INVOICES, BILLS OF LADING, PACKAGES, CORRESPONDENCE, ETC.

K 120000

213234

**CASEL**

815 W. Van Buren Street  
Chicago, IL 60607

**INVOICE**

Date	Invoice #
04/26/21	JMELGOZA1

**BILL TO:**

**Mt. Diablo Unified School District**

1936 Carlotta Dr  
Concord, CA 94519

**INVOICE DUE DATE**

05/31/21

DESCRIPTION	QUANTITY	AMOUNT
Registration for Inaugural Allstate Foundation Cohort of the SEL Fellows Academy.	1	\$2,500.00

**Remit To:**

**CASEL Lockbox**

**P.O. Box 95253**

**Chicago, IL 60694-5253**

**TOTAL**

**\$2,500.00**

K123303

01 3212 0000 2100 3212000  
504 002 5210

*In 12 months, you will deepen your social and emotional learning (SEL) expertise and your own practice as a leader. Join our supportive network to make a difference for the community you serve.*

## THE Opportunity

For more than a decade, CASEL has been in deep partnerships with school districts nationwide to make SEL central to education. The first-of-its kind SEL Fellows Academy offers a select number of district and regional SEL leaders the opportunity to grow and strengthen SEL leadership practices in community with one another. CASEL, the trusted source on SEL, will provide a 12-month virtual leadership academy that pairs SEL expertise with a supportive community of practice to help you advance SEL implementation for equity and excellence.

Whether you have been leading SEL in your community for years or are just beginning the work, the SEL Fellows Academy will guide you in deepening your SEL practice at a personal, interpersonal, and institutional level. This is a unique opportunity to connect with colleagues leading similar work across the country and help you support one another throughout the year.

## THE Experience

The SEL Fellows Academy builds on the success of our field-tested model through workshops, peer sessions, and year-long access to CASEL expertise and resources.



### Build your capacity for SEL leadership

Engage in leadership practices and coaching strategies and apply them to your unique context to address critical problems of practice.



### Create or enhance your SEL plan

Develop an implementation plan with localized action strategies based on the evidence-based CASEL framework. Create an inquiry-based capstone project on SEL implementation to help sustain your work.



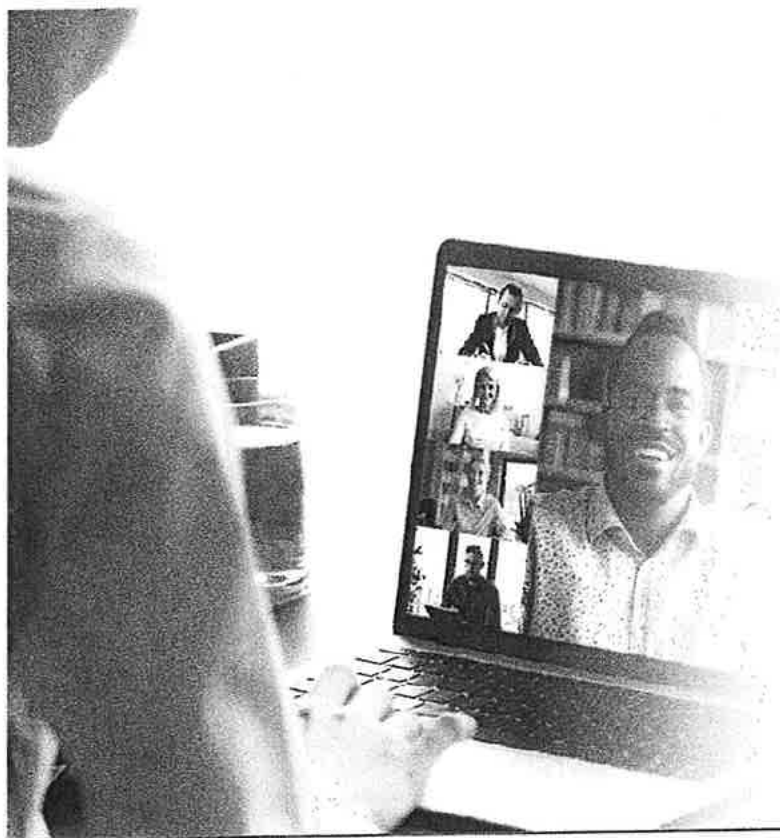
### Join a community of practice

Foster long-term commitment and sustainability of SEL through regular opportunities to learn from a growing network of peers. Fellows will be lifelong members of CASEL's alumni network.



### Influence nationwide adoption of SEL

Create, test, and refine practical approaches for SEL implementation to address challenging issues. Lessons learned will be gathered and shared broadly with educators nationwide.



Generously supported by the



**Allstate.**  
Foundation

Questions? Email [SELFellows@casel.org](mailto:SELFellows@casel.org)

© CASEL 2021

R123303



## Application of Interest for the Inaugural Allstate Foundation Cohort Due by **April 12, 2021 at 5:00 pm ET**

If accepted, you will be notified in early May. Please note, the application of interest requires a letter of support from your supervisor or district superintendent.

## Is this the right opportunity for you?

CASEL will select up to 50 passionate SEL leaders committed to building healthy relationships and creating just communities where all adults and students can thrive.

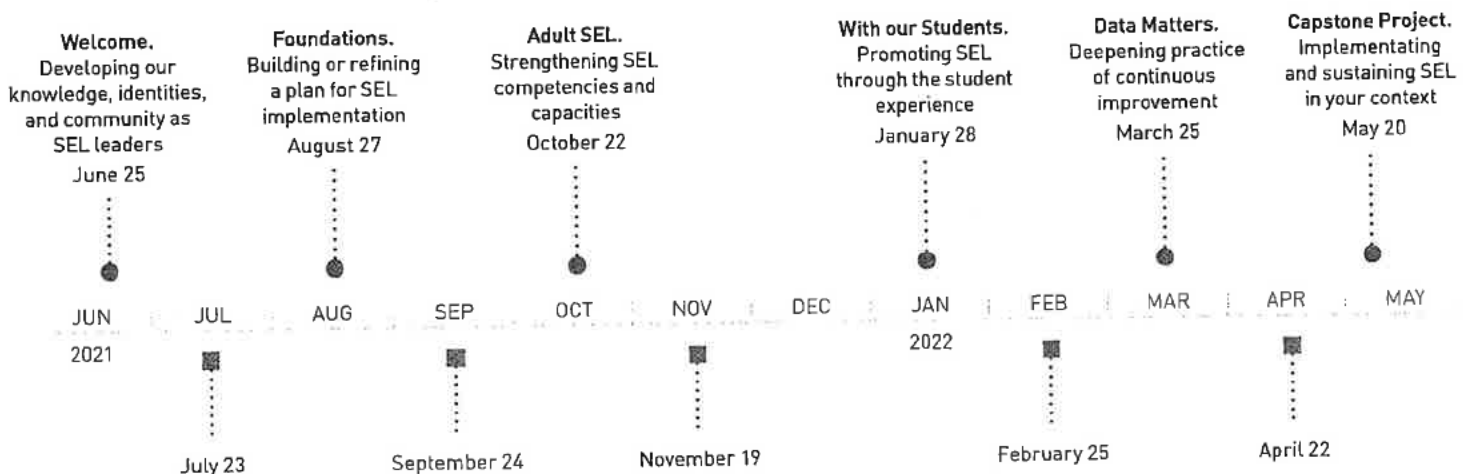
If you are employed by a school district or regional office of education in the United States and responsible for leading SEL in your community, the SEL Fellows Academy could be right for you!

With the generous support of **The Allstate Foundation**, the SEL Fellows Academy will be available in the inaugural year only for \$2,500 per person and will include:

- Six whole group workshops (four hours each), (12:00-4:00 pm ET)
- Five peer inquiry group sessions (90 minutes each), (1:30-3:00 pm ET)
- 5-6 dedicated hours per month to work on assignments and your capstone project
- Monthly collaboration with a Journey Partner to enhance peer learning with honest conversations to your mutual benefit.

● Full group workshops

■ Peer inquiry group sessions







# Funders and Growth Partners

In the more than two decades CASEL has led the development of a new field in education: social and emotional learning (SEL). Our research has documented impact. Our on-the-ground work in districts has accelerated implementation. Our advocacy efforts have helped embed SEL into public policies.

We are extremely grateful to the private philanthropists, government agencies, and individual donors who help us to reach millions of students every year with SEL. National and local donors across the country support CASEL's general operations and strategic priorities.

## CASEL Funding Partners

### The Allstate Foundation

The Allstate Foundation and CASEL are collaborating to focus the country's attention on the power of social and emotional learning to equip the next generation with the skills they need to succeed. In 2021, The Allstate Foundation provided support to develop and launch a new SEL Fellows Academy, a year-long engagement with school districts nationwide to advance implementation of high-quality SEL in their communities. The inaugural Allstate Foundation class of districts will be provided with the necessary expertise and a strong community of practice to bring SEL to more students. In addition, The Allstate Foundation supports CASEL's communications to establish broad awareness and understanding of SEL. Previous support has included partnership on a national survey of youth to improve schools to be engines of learning and opportunity, and sponsorship of CASEL events. The Allstate Foundation champions SEL and service-learning programs to ensure youth reach their full potential and have the power to build the just,

## Menu

### About

- [Our People](#)
  - [Board](#)
  - [Staff](#)
  - [CASEL Consultants](#)
  - [Funders](#)
  - [Collaborators](#)
    - [Research Advisory Group](#)
- [CASEL Awards](#)
- [History](#)
  - [Milestones](#)
- [Jobs](#)

### What is SEL?

- [Benefits of SEL](#)
- [CASEL Framework](#)
- [Theory of Action](#)
- [FAQs](#)

### SEL in Action

- [SEL Roadmap to Reopen School](#)
- [SEL Stories](#)
- [In Districts](#)
- [In Schools](#)
- [In Classrooms](#)
- [In Homes/Communities](#)

### Partner Districts

- [Districts](#)
- [Key District Findings](#)
- [Professional Learning Communities](#)

### Research

- [Current Research](#)
- [Collaborators' Research](#)
- [Benefits of SEL](#)
- [Transformative SEL](#)

### Policy

- [Federal](#)
- [State](#)
  - [Collaborating States Initiative](#)
  - [State Scan](#)
  - [CSI Tools and Resources](#)

### Resources

- [SEL Background and Research](#)

equitable and healthy world we all deserve. To learn more, visit [www.allstatefoundation.org](http://www.allstatefoundation.org)

## **Bill & Melinda Gates Foundation**

The Bill & Melinda Gates Foundation is providing CASEL support to engage in a strategic business planning. Guided by the belief that every life has equal value, the Bill & Melinda Gates Foundation works to help all people lead healthy, productive lives. In developing countries, it focuses on improving people's health with vaccines and other life-saving tools and giving them the chance to lift themselves out of hunger and extreme poverty. In the United States, it seeks to significantly improve education so that all young people have the opportunity to reach their full potential. Based in Seattle, Washington, the foundation is led by CEO Dr. Susan Desmond-Hellmann and Co-chair William H. Gates Sr., under the direction of Bill and Melinda Gates and Warren Buffett.

- [Implementation Tools and Resources](#)

- [Webinars](#)

- [News](#)

- [Press Room](#)
- [CASEL in the News](#)
- [SEL in the News](#)
- [Year in Review](#)

- [Contact](#)

## **Chan Zuckerberg Initiative**

Chan Zuckerberg Initiative (CZI) is providing support to CASEL to engage leading scholars and practitioners in a collaborative process to ensure SEL reflects the latest science and best practices and policies in the field. Findings will inform the continued development and refinement of CASEL's suite of practical resources to support schools and school districts nationwide in promoting social and emotional learning. CZI is a new kind of philanthropy that's leveraging technology to help solve some of the world's toughest challenges – from eradicating disease, to improving education, to reforming the criminal justice system.

## **LG Electronics USA**

CASEL is partnering with the LG Electronics USA Life's Good: Experience Happiness initiative to equip youth with the essential life skills and supportive learning environments to become knowledgeable, caring, contributing and happy adults, citizens, co-workers, friends and family members. LG funding will support CASEL partner districts' membership into the Collaborating Districts Initiative, which helps districts across the country implement curriculum, share best practices and challenges, and helping to ensure the long-term sustainability of high-quality SEL across all aspects of the school community. LG also will also join CASEL's 2019 National Conference, engaging 1,200 educators, scholars, policy-makers, and others committed to high-quality SEL programming for all students. Together, the partnership supports an education that prioritizes academic, social, and emotional learning, including the promotion and advancement of sustainable happiness skills, for all youth. The LG corporate social responsibility initiative was launched to enrich the lives of 5.5 million youth in the United States over five years.

## **New Profit**

New Profit is a national venture philanthropy organization that backs social entrepreneurs who are advancing equity and opportunity in America. New Profit exists to build a bridge between these leaders and a community of philanthropists who are committed to partnering with them to catalyze their impact. To take on entrenched systemic challenges in America, New Profit is focused on driving resources and support to Black, Indigenous, and Latino/a/x social entrepreneurs who have unique proximity to solutions, but face stark racial funding disparities in philanthropy; investing in social entrepreneurs with new systems change models across a range