



# *Board Equity Presentation*

School District of Lodi  
May 10, 2021

# Agenda

*What Is Equity?*

01

*Why Focus On Equity?*

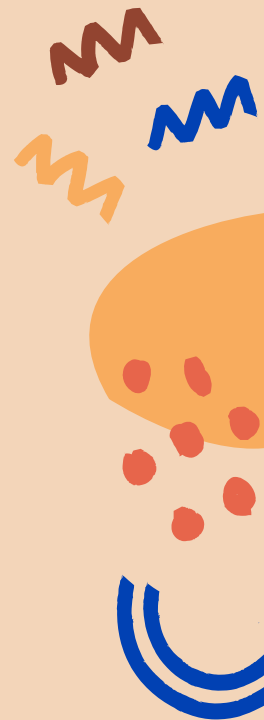
02

*2020/2021 Activities  
(A Review)*

03

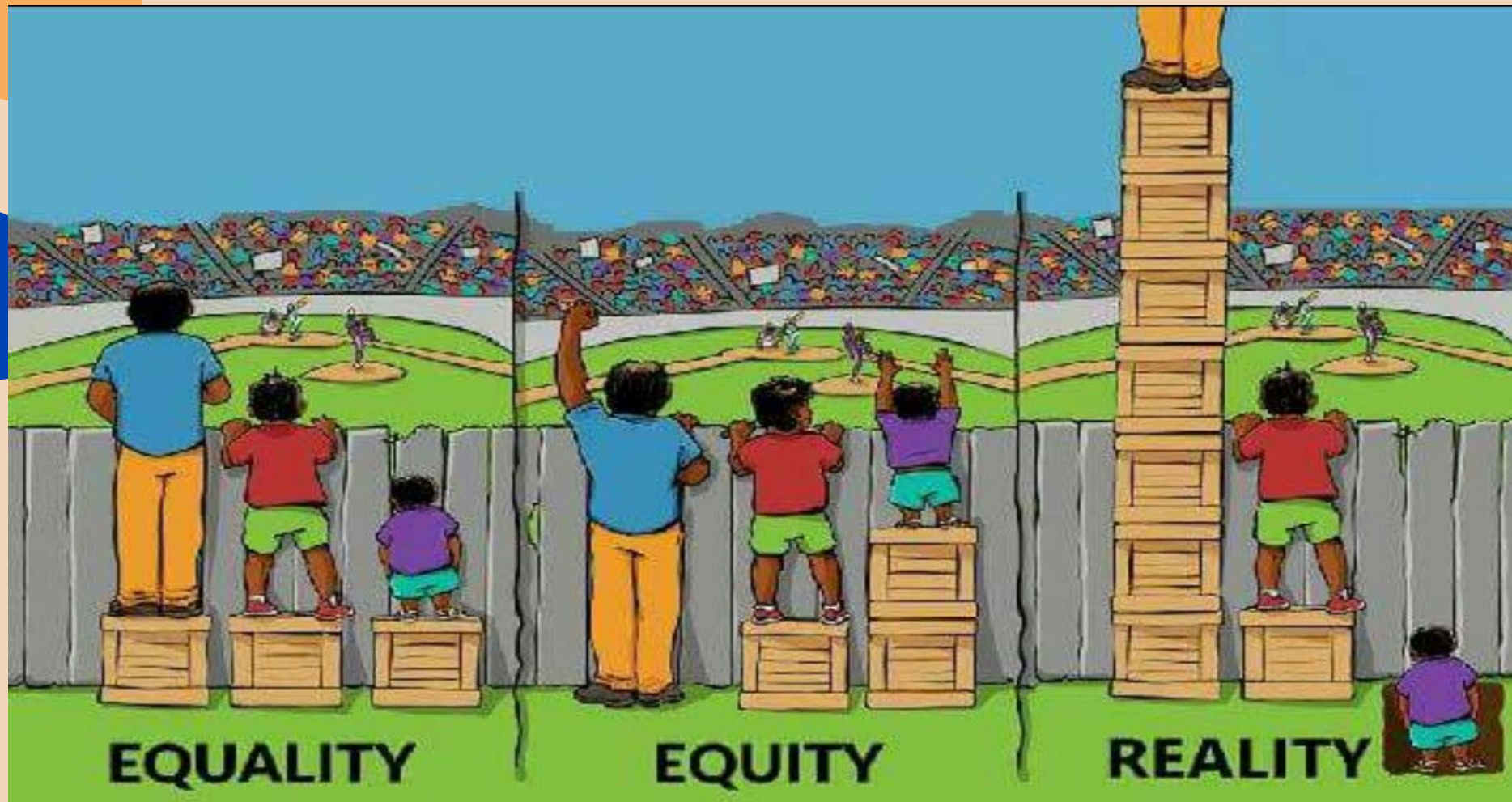
*Final Reflection*

04



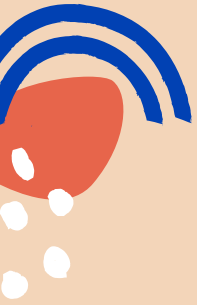


# What is equity?



# Why focus on equity?







# Youth Risk Behavior Survey (2019)

- Students who feel like they belong at school:
  - 69% Lodi High School
  - 73% Lodi Middle School
- Students who feel they belong who reported mental health concerns:
  - 43% Lodi High School
  - 46% Lodi Middle School
- Students who feel they do NOT belong who reported mental health concerns:
  - 87% Lodi High School
  - 88% Lodi Middle School





# Youth Risk Behavior Survey (2019)

<b>LGBTQ+ Feel They Belong</b>	<b>Non-LGBTQ+ Feel They Belong</b>
49%	72%

<b>Hispanic Feel They Belong</b>	<b>White Feel They Belong</b>
58%	71%

<b>Other Races Feel They Belong</b>	<b>White Feel They Belong</b>
45%	71%





# Our 2020/2021 Process

*Develop some system-wide common understanding*

*Windows  
&  
Mirrors*

*Equity  
Basics  
Part 1*

*(With Dr. Briggs)*

*Equity  
Basics  
Part 2*

*(With Dr. Briggs)*

*Equity  
Basics  
Part 3*

*(Reflection &  
Review)*

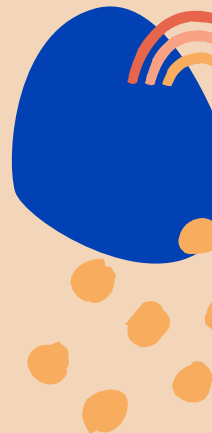
*Fall*

*Fall*

*Winter*

*Winter*

*Next  
Steps...*



An illustration of four diverse people (two men and two women) holding a large white banner. The banner contains text about Lodi activities. The people are shown from the chest up, with their heads and shoulders visible. They are wearing various colored shirts: dark blue, yellow, blue, and red. The background is a solid light orange color.

## Additional 2020/2021 Lodi Activities

- During the 2020/2021 school year, staff had the option of choosing a Professional Practice Goal focused on Equity and to participate in an Equity book study.
  - Active participants in the Dane County Equity Consortium
  - The Institute for Critical Consciousness (Various admin members - four half days)
  - Summer 2020 Dane County Equity Book Study - (Various admin and staff members)
    - Development of English Learner Staff Workgroup
    - Culturally Responsive Teaching Training - All New Educators
  - A group of Lodi High School students participated in the 2021 Dane County Youth Equity Forum
  - Board of Education participated in a Dane County Equity Meeting for area School Board Members
    - Welcoming Schools Training for Secondary Educators



# Possible Next Steps

- Develop a district-wide equity team that includes staff, students, and diverse voices (perhaps even community members)
- Identify, evaluate, and adopt an equity framework to leverage for future equity work
- Identify, evaluate, and utilize an equity audit tool/process to evaluate our system
- Develop a district-wide tool for equitable decision making
- Develop a district-wide equity statement to be highlighted in each school
- Professional development around creating safe spaces for difficult classroom topics
- Professional development around implicit bias
- Continue to create student groups at each level that can support us in creating a sense of belonging
- Continue to analyze curricular resources and how they act as Windows & Mirrors

